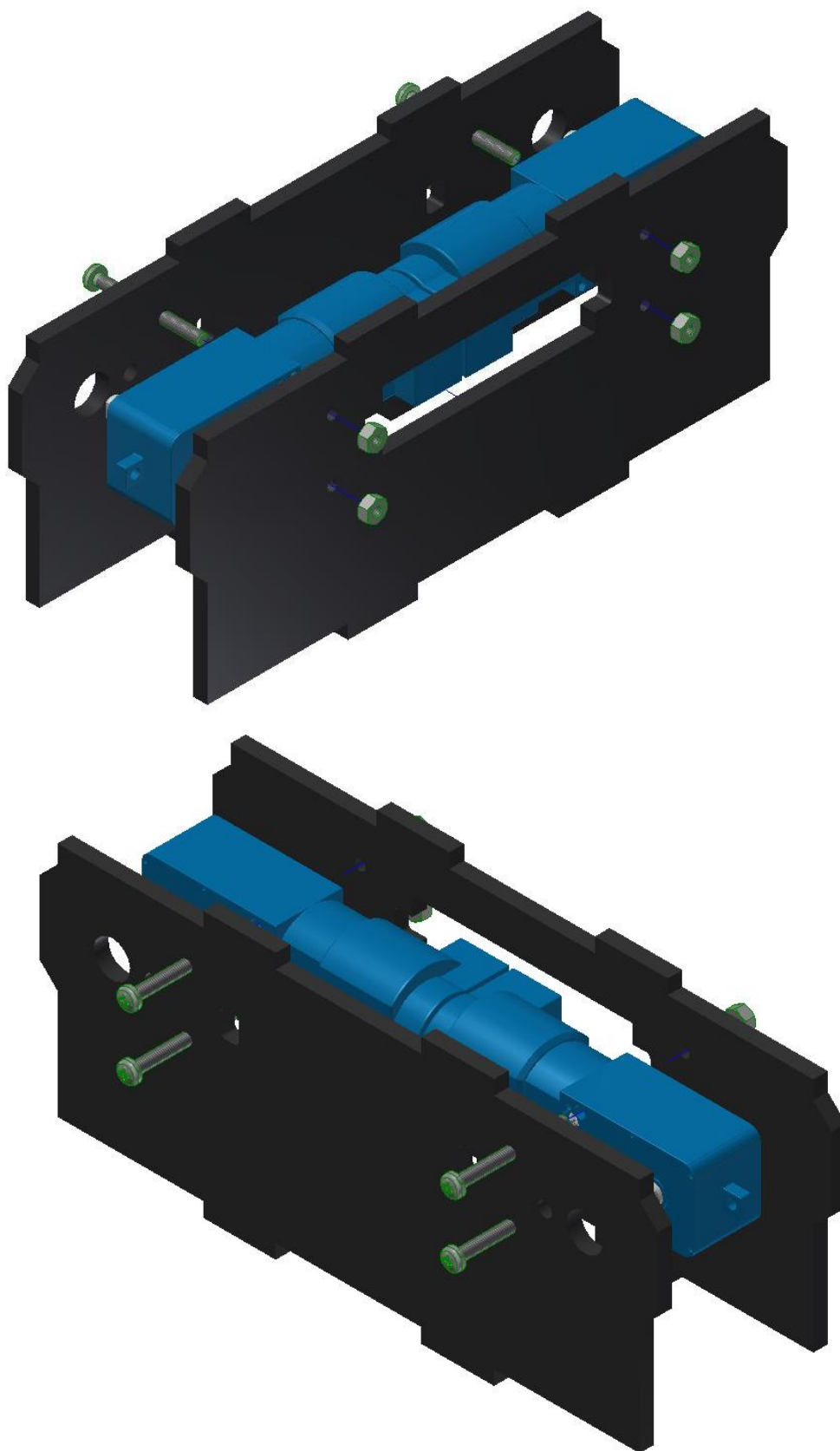
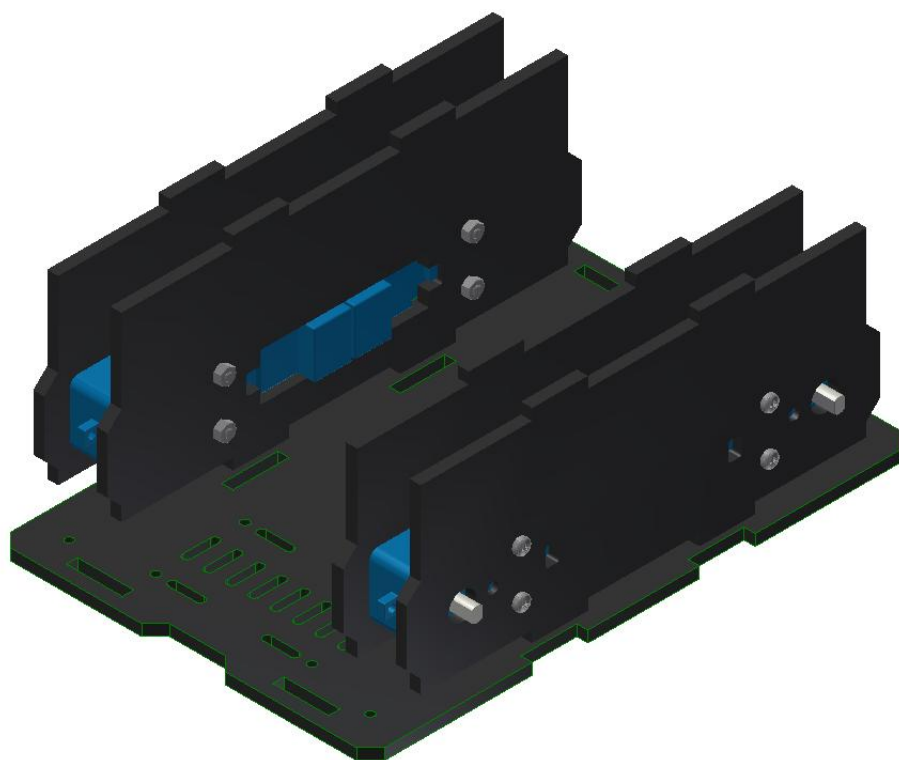


MO218 双层麦轮底盘 R2 安装说明书

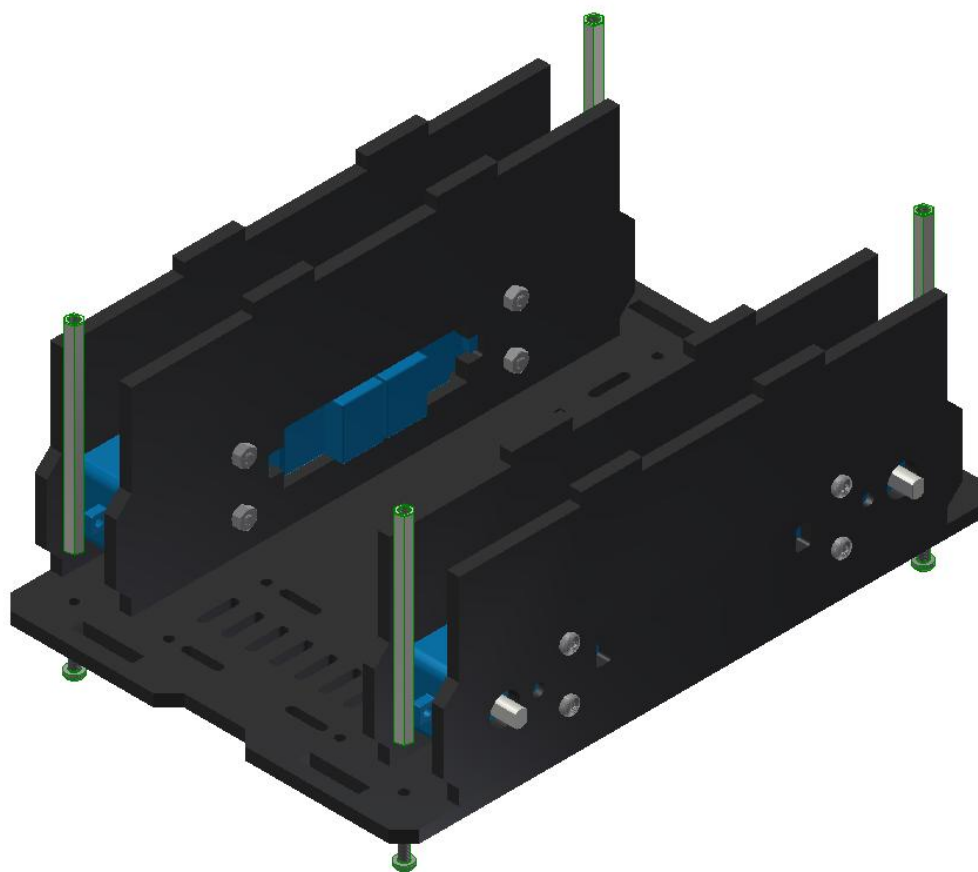
步骤 1: 安装 TT 编码电机至内外侧板



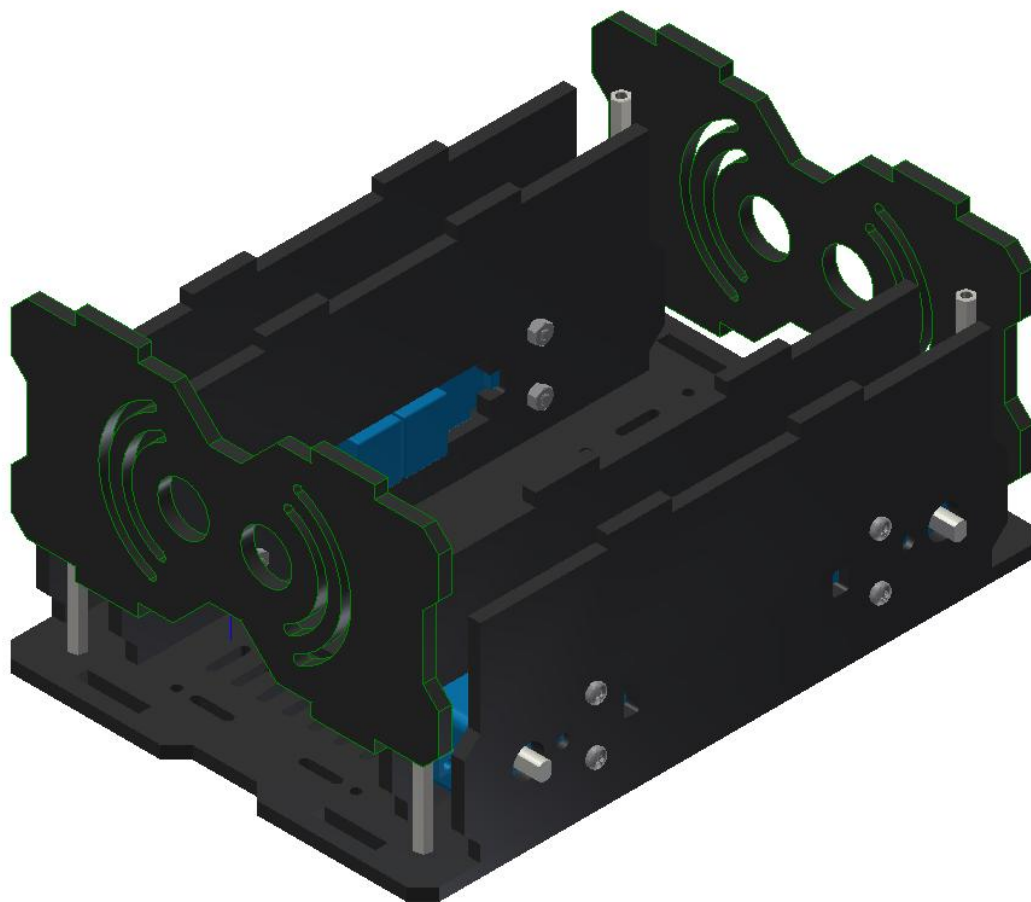
步骤 2: 安装内外侧板至底板



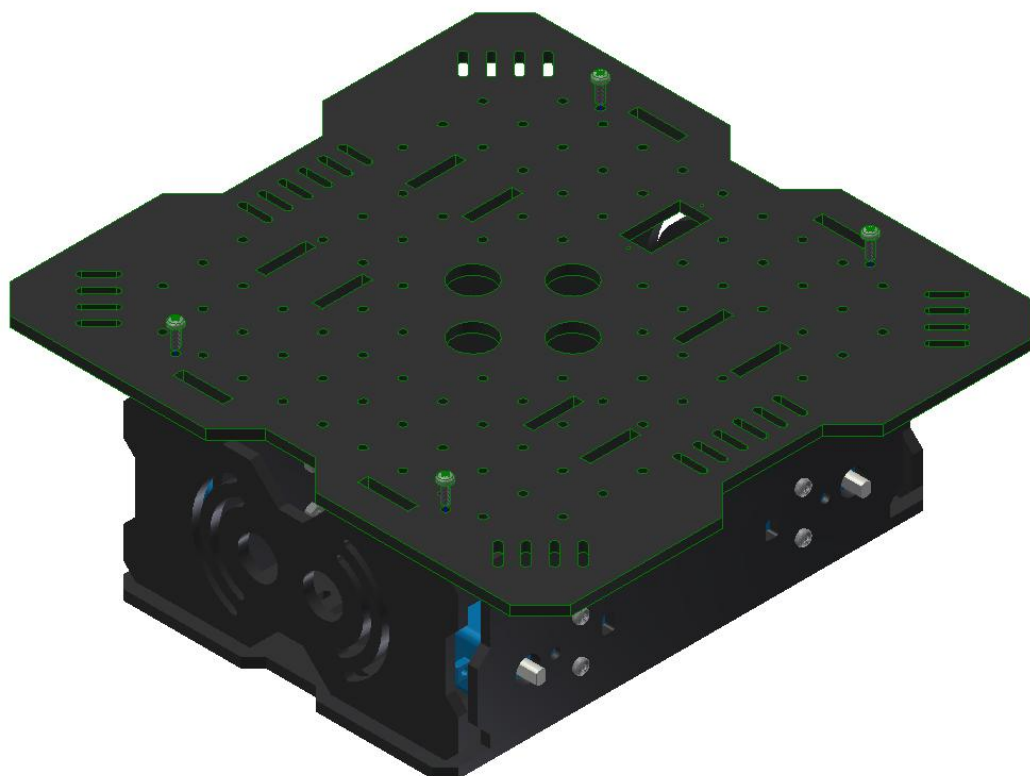
步骤 3: 安装上下板固定铜柱至底板



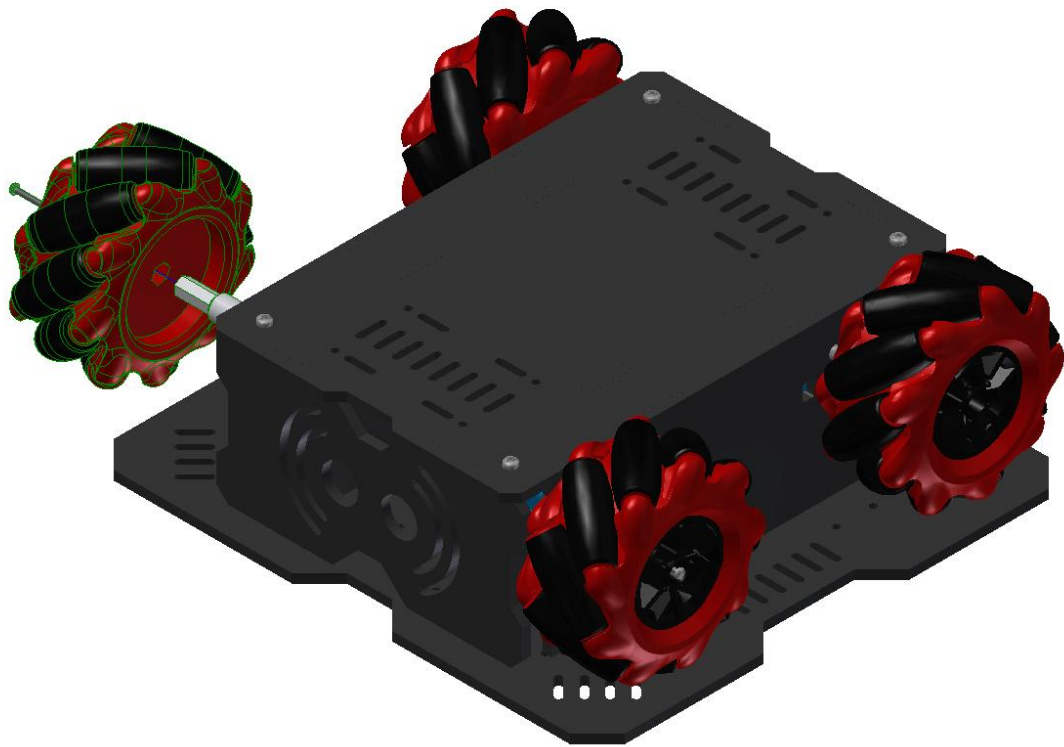
步骤 4: 安装前后侧板至底板



步骤 5: 安装顶板



步骤 6: 安装麦轮以及联轴器



安装后的成品

